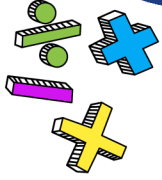


Aspire TODAY *Inspire* TOMORROW

VISIT OUR DEPARTMENTS

PERINS SCHOOL OPEN EVENING: 5 -7 PM



MATHS

In Turing, we have many games to test your Mathematics. Try estimating angles with "Banana Hunt". Play the nation's favourite Maths gameshow with our countdown station. You can even be entered into a free draw to win a Scientific calculator.

HISTORY



Come to Rousseau to test your local history knowledge with some historical games and challenge your source skills, including 'Guess the Artefact.'



DESIGN TECHNOLOGY

In Stephenson, hear from our KS4 Students about the new skills you will be learning. We have a selection of laser-cut, slot toys that you can colour and assemble to take home. In Food Tech, watch our pupils baking and sample their cooking, or have a go at playing 'Guess the food/ingredients.'



RELIGION, PHILOSOPHY AND ETHICS

Come and find us in Rousseau, where our department will be colouring some Mandalas. Why not have a go at answering some of our philosophical questions? Can you explain your opinions and add to our philosophical department tree?



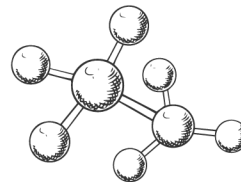
ENGLISH

We will be going back in time and using quills and ink to write spells like Shakespeare and creating word webs inspired by gothic images

GEOGRAPHY



In Geography, also Rousseau building, make an earthquake-proof tower out of marshmallows and spaghetti and can you guess the place or feature from the Geography mystery box? Plus, many more games to test your Geographical knowledge.



SCIENCE

Visit us in Nightingale:
N1 for Biology, where we will have microscopes, models of various organs, and hands-on practicals.
N2 for our hands-on chemistry and physics activities with challenges to try, and phenomena to explore.
N3 for two live sessions of demonstrations at 17:45 and 18:15

VISIT OUR DEPARTMENTS

Aspire **TODAY** *Inspire* **TOMORROW**

P.E



Get involved in a wide range of activities in our Sports Hall, or head to our on-site gym to make use of the fitness suite equipment. Our staff will be on hand to answer any questions and help you get the most out of your experience.

MUSIC



Join us in Hub 3, where our Music department will give a tour of our fabulous rooms. See our GCSE students as they utilise our practice rooms for their coursework rehearsals and even join in a typical weekly choir rehearsal.



LANGUAGES

In Eliot, MFL have a continental cheese buffet, Miss Sautier will be making traditional French crepes, and you can create an animal to add to our international nature reserve!

ART & PHOTOGRAPHY



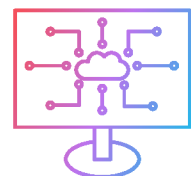
Come and view some of the amazing artwork our students have produced across the year groups in Eliot. E1 will have Art GCSE students working on their coursework. E2, you can test out your photography skills.

CREATIVE ARTS



In Hub 1, there will be an opportunity to see some live performances from across the Music, Dance & Drama departments, as well as our props & costume collection. In Hub 2, watch our Dance students in action as they prepare for 'The Great Big Dance Off!' A popular national dance competition.

COMPUTING



Find us in Eliot building, where you can experiment with various programming activities, as well as Fruit pianos, Binary safe cracking and Hama bead images.

THE JUNCTION AND THE STATION



The Junction: Meet our lovely school Guinea pigs! Forest School Fun, and more!

The Station: Inclusion timeline - walk in the footsteps of a child who joins us at The Station.