

# GO FAR GO FURTHER

SKILLS • KNOWLEDGE • CAREERS



BASINGSTOKE  
COLLEGE of  
TECHNOLOGY

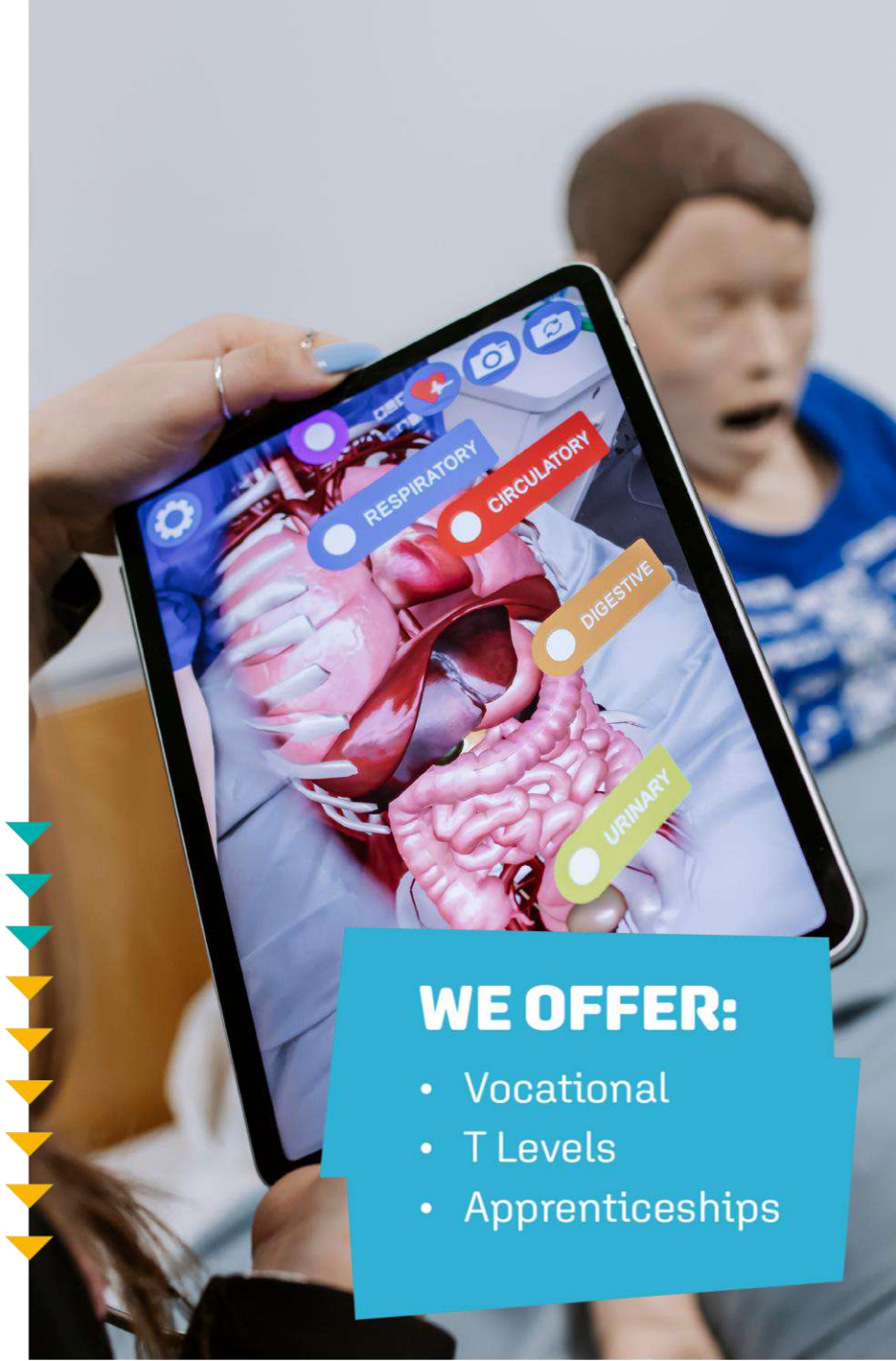




# INDUSTRY-LED COURSES

WE OFFER LEVEL 2 /3 COURSES IN:

- ANIMAL MANAGEMENT
- ART AND DESIGN
- AUTOMOTIVE
- BEAUTY THERAPY AND MEDIA MAKE-UP
- BUSINESS
- CONSTRUCTION
- COMPUTING AND IT
- EARLY YEARS AND CHILDCARE
- ENGINEERING
- FOUNDATION LEARNING
- HAIR AND BARBERING
- HEALTH AND SOCIAL CARE
- HOSPITALITY AND CATERING
- MEDIA AND GAMES DESIGN
- PUBLIC SERVICES
- TRAVEL AND TOURISM



## WE OFFER:

- Vocational
- T Levels
- Apprenticeships

# WELCOME TO THE NEXT LEVEL



## COURSES ON OFFER:

- ANIMAL MANAGEMENT
- BUSINESS
- COMPUTING
- CONSTRUCTION
- EARLY YEARS
- ENGINEERING
- HEALTH CARE
- MEDIA

**2 YEAR**  
course, taken after GCSEs

**80%**  
classroom  
**20%**  
workplace

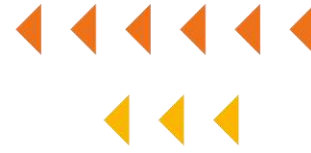
Equivalent to  
**3 A-LEVELS**

**45 DAY**  
industry placement



**T-LEVELS**

# STUDY AN APPRENTICESHIP



## WHAT IS AN APPRENTICESHIP?

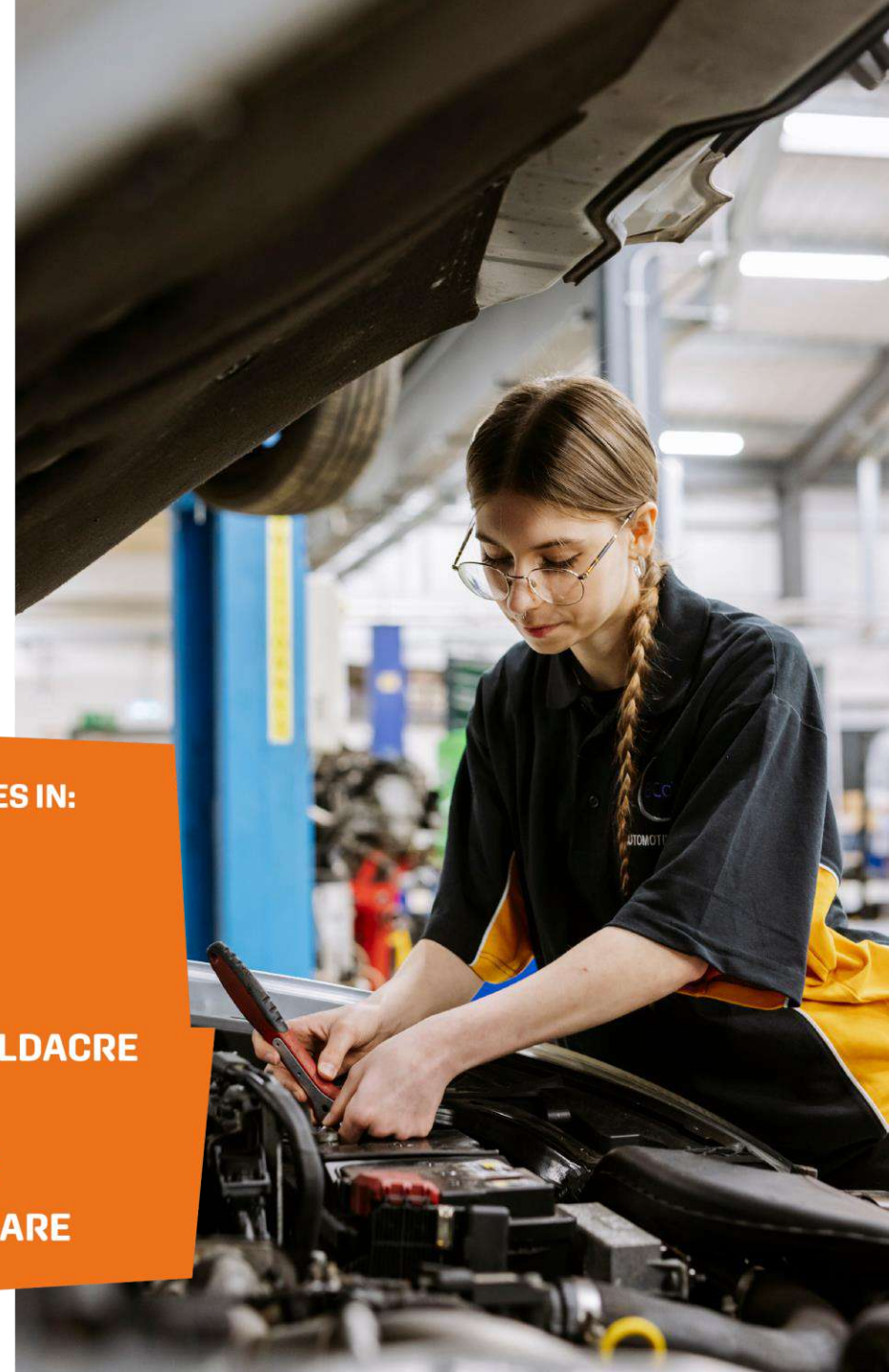
- **The chance to learn on the job, instead of in the classroom full time.**
- **Assessed on a continuous basis, with some exams and end point assessments.**
- **Apprenticeships involve either day release to BCoT or personal tutoring within your workplace.**

## WHY STUDY AN APPRENTICESHIP?

- **Gain recognised qualifications**
- **Workplace experience and skills**
- **Study while earning a salary**

## WE OFFER LEVEL 2 /3 COURSES IN:

- **AUTOMOTIVE**
- **BUSINESS**
- **CONSTRUCTION**
- **EARLY YEARS AND CHILDACRE**
- **ENGINEERING**
- **HAIR AND BARBERING**
- **HEALTH AND SOCIAL CARE**



# ENTRY REQUIREMENTS

## ▶ LEVEL 3

FIVE GCSES AT GRADE 4 OR ABOVE  
INCLUDING MATHS AND ENGLISH

## ▶ LEVEL 2

FOUR GCSES AT GRADE 3 OR ABOVE  
INCLUDING MATHS AND ENGLISH

## ▶ LEVEL 1

NO FORMAL QUALIFICATIONS



# GET INVOLVED IN STUDENT LIFE

## ENRICHMENT CURRENTLY INCLUDE:

- ART & CRAFTS
- FOOTBALL & BADMINTON
- ESPORTS
- MUSIC & DANCE
- LGBTQ+
- DRIVING THEORY

## OTHER OPPERTUNTIES INCLUDE:

- NHS
- DUKE OF EDINBURGH
- EVENTS
- FUNDRAISERS



TURING SCHEME TRIPS AROUND EUROPE



# GO FURTHER WITH CAREER-READY COURSES



**BRANDON MUNDAY**  
LEVEL 3 ENGINEERING  
APPRENTICESHIP

Destination: Service  
Engineer at **Bioquell/Ecolab**



**LAUREN NASH**  
LEVEL 3 HEALTH AND  
SOCIAL CARE

Destination:  
Studying adult  
nursing at **University  
of Winchester**

**HARRY HERDMAN**  
LEVEL 3 MOTORSPORT

Destination:  
Employment at  
**McLaren**



**ALIYA BOND**  
LEVEL 3 TRAVEL  
AND TOURISM

Destination: Cabin  
crew at **British  
Airways**



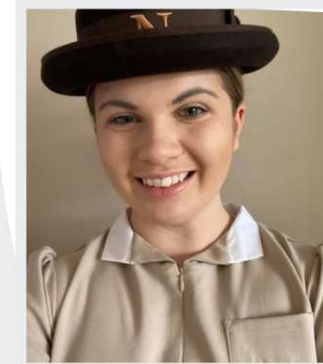
**REBECCA TREADGOLD**  
LEVEL 3 BUSINESS

Destination: Global HR  
Officer at **Stanley Black  
& Decker**



**EMILY LAWRENCE**  
LEVEL 3 CHILDCARE

Destination:  
Studying Childcare  
at **Norland College**



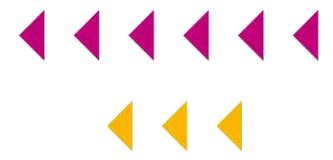
**BENJAMIN STANSBRIDGE**  
LEVEL 3 ANIMAL  
MANAGEMENT

Destination: Reptile Zoo  
Keeper at **Crocodiles of  
the World**





# STUDENT SUPPORT



**RETENTION AND PROGRESSION TUTORS**



**COUNSELLING**



**ADDITIONAL LEARNING SUPPORT**



**SAFEGUARDING**



**CAREERS AND EMPLOYABILITY**



**EQUALITY AND DIVERSITY**



**COLLEGE NURSE**



**BURSARY SUPPORT**



**THE HAVEN**



# DATES FOR YOUR DIARY



## OPEN EVENTS

7 October, 4.30pm to 7pm  
23 November, 10am to 12.30pm  
28 April, 4.30pm to 7pm



## APPRENTICESHIP FAIRS

5 February, 4.30pm to 7pm  
17 June, 4.30pm to 7pm



## COLLEGE KEY DATES

Year 10 Taster Days, 8-10 July  
Applications open, start of October  
Application deadline, end of December



## OCTOBER TO DECEMBER

We offer Application Clinics for students struggling with their applications.

# APPLICATION PROCESS

## ATTEND AN OPEN EVENT

Visit our open events to find out more about the College and take a look around.

---

## APPLY ONLINE

Go to [bcot.ac.uk/apply](https://bcot.ac.uk/apply)

---

## RECEIVE A CONDITIONAL OFFER

---

## COME TO A FACULTY EVENING

Students can find out more about their course and have the chance to ask any questions they might have.

---

## ATTEND OUR WELCOME EVENT

Our summer event will help prepare students for College in September.

---

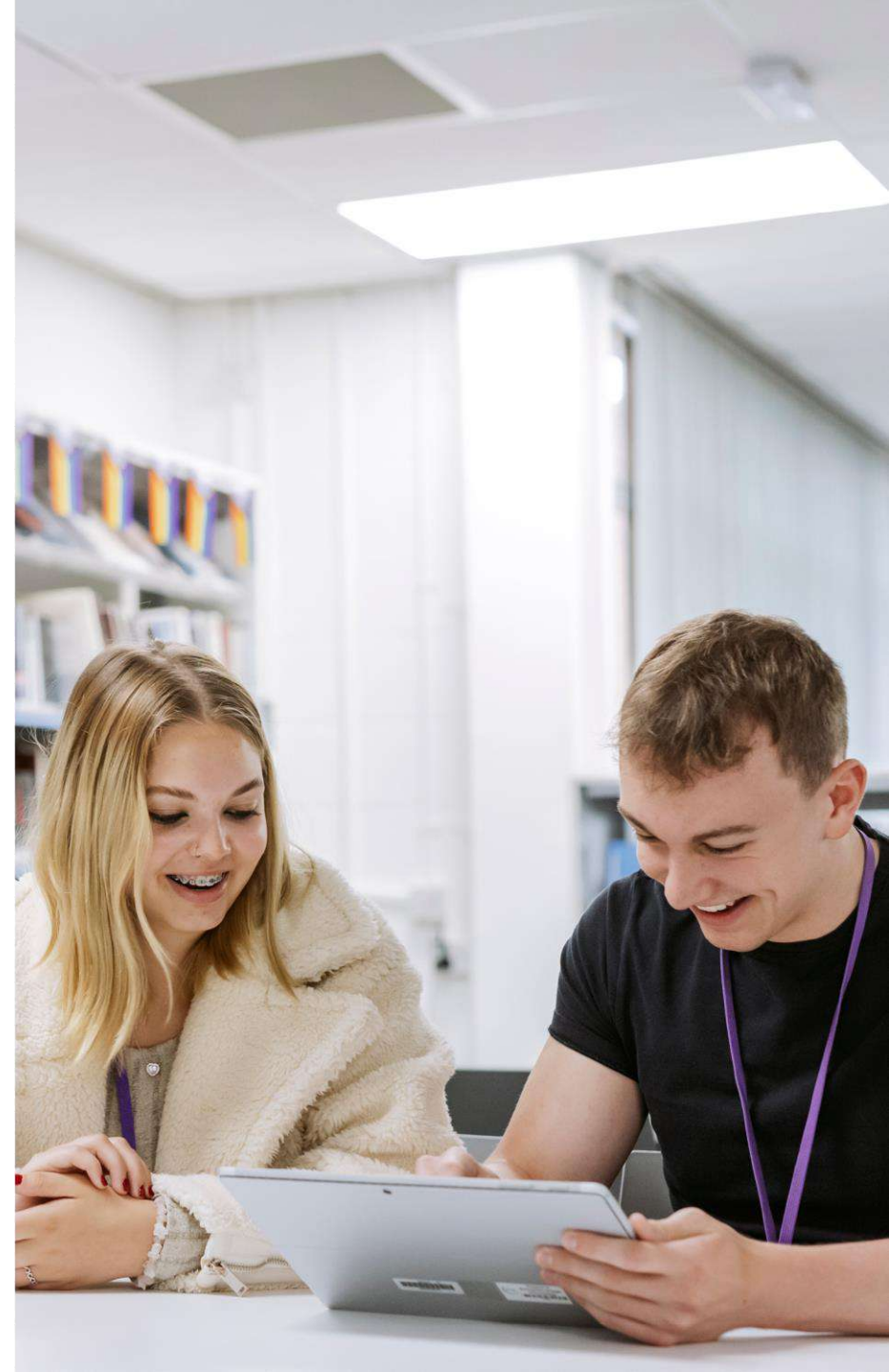
## RESULTS DAY

If students didn't quite achieve what they hoped for – there are always other options available.

---

## ENROLMENT

Officially join the College, receive their ID card and starter pack.



# GETTING TO COLLEGE

## LIVE OUTSIDE BASINGSTOKE? DON'T WORRY!



Get discounted train travel.



Travel bursaries are available based on household income.



Enjoy up to 25% off bus fares from Zone 2 areas.



Get a parking permit for just £6 a month and park at College once you've passed your driving test.



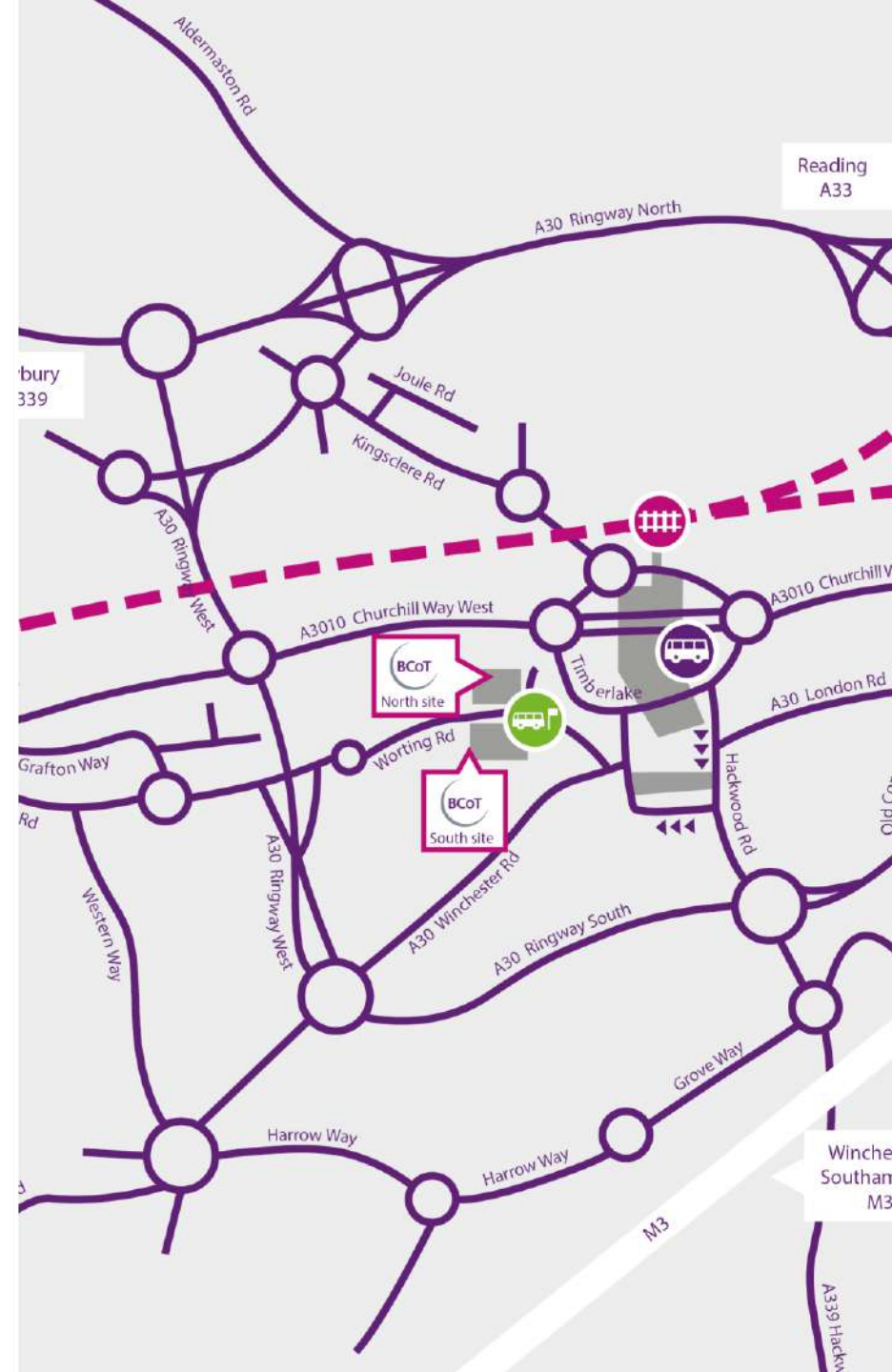
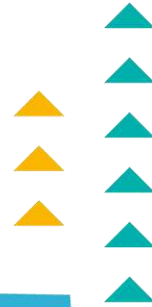
10 minute walk to Basingstoke train station



10 minute walk to Basingstoke bus station – Festival Place



Bus stops outside college sites





BCOT

BRUNEL COLLEGE OF TECHNOLOGY

Leading Careers of Tomorrow