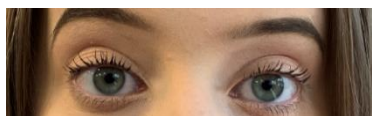


# Uniform Requirements

Students should wear...	Students must not wear...
<p>✓ <b>Blazer: Winter uniform (September – May half term)</b>- Traditional school uniform style in black with school badge on breast pocket. The blazer is a compulsory item of uniform.</p> <p><b>Summer uniform (May half-term – end of the summer term)</b>- It is acceptable to not wear the blazer described above. Students are permitted to wear the V-neck school jumper, as described below.</p>	<p>✗ <b>Winter Uniform (September-May half term)</b>: A coat or a jumper instead of their blazer.</p> <p><b>Summer uniform (May half-term –end of the summer term)</b>- Any non-uniform garment on top of their shirt, except for a coat.</p>
<p>✓ <b>Skirt</b>: A black, pleated skirt with the Perins badge visible. The skirt will always touch the child’s knee when they are standing upright.</p> <p><i>Please allow for growth when purchasing the skirt: our suggestion would be to buy a skirt which will give the student as much wear as possible, but still conforms to the rule of touching the knee.</i></p>	<p>✗ Skirts that do not reach the knee when standing.</p> <p>Skirts that are rolled.</p>
<p>✓ <b>Trousers</b>: Black traditional style or cropped suit style trousers.</p>	<p>✗ Cotton fabrics, combats, cords, jeans, chinos, hipsters, or flared styles. Fabrics with a high Lycra content, which cling to the body</p>
<p>✓ <b>Shorts</b>: It is permitted to wear black, tailored shorts all year round.</p> <p><i>Shorts must still be worn with the correct black socks and school shoes detailed below.</i></p>	<p>✗ No other style or colour shorts are permitted.</p>
<p>✓ <b>Shirt</b>: White traditional school shirt with standard collar. Shirts must be worn tucked into trousers or skirt.</p>	<p>✗ Under shirts in bright colours or with images.</p>
<p>✓ <b>Socks</b>: Black socks.</p>	<p>✗ No substituted colours- white is only acceptable for PE</p>
<p>✓ <b>Tights</b>: Plain black, or natural in colour.</p>	<p>✗ No socks, of any colour, are to be worn over tights.</p>
<p>✓ <b>Shoes</b>: Black leather polishable shoes (with laces of the same colour if applicable). They should be smart and practical for all school activities. Shoes must fit feet securely and not be worn down at the back; ‘flip flop’ action is unacceptable. See below for some examples of expectable shoes.</p>	<p>✗ Boots, stilettos, canvas types (Vans or similar brands), flip-flops, sandals, or open-toes styles.</p> <p>Whilst black, polishable trainers style shoes are now permitted we request that the silver logo tags or similar are removed.</p>

✓	<b>Jumper:</b> Plain black, fine knit, long-sleeved, with V neck. This is an optional item.	✗	A rounded neck, sweatshirt, or hoodies.
✓	<b>Tie:</b> School tie in house colour (Ventus = yellow, Ignis = red, Terra = green, Aqua = purple). Ties must be worn to a length where a minimum of 14 coloured/silver stripes can be clearly seen.	✗	
✓	<b>Outside Coats:</b> Coats that are blue, black, white, beige or house colours (red, yellow, green, and purple) are permitted. The coat must be a plain type worn over (not instead of or under) blazers in cold weather. Scarves and hats (of the above colours) are permitted, but they are only to be worn in cold weather, not as a fashion garment.		No denim, jumper material or hoodies. Any motifs or labels on coats/bags that may be offensive or inappropriate for school.
✓	<b>Jewellery/ Body Piercings:</b> One stud in each ear lobe is permitted and students are permitted to wear a wristwatch.	✗	No other jewellery is permitted including second studs in ears, tunnel earrings or any other body jewellery like rings, bracelets, and necklaces.
✓	<b>Hair Style:</b> Hair must be clean, neat, and tidy, and kept at a reasonable length. Hair colour should be natural tones only.	✗	Extreme styles including shaving patterns into the hair, and extreme colours.
✓	<b>Make-up:</b> At Perins we would prefer students not to wear make-up whilst at school. However, if make-up is worn then it should fit the below guidelines. Natural looking make-up that includes: a thin layer of foundation and concealer, lightly filled eyebrows following a natural shape, nude eye shadows, and a thin layer of mascara.	✗	Eyeliner, coloured eye shadows and heavy foundation is not permitted and if worn at school the student will be asked to remove it.
✓	<b>Nails:</b> Clear or nude nail polish is acceptable.	✗	No acrylic, extension, or extra-long nails and coloured nail varnish.

#### Acceptable Make Up Example



#### Acceptable Shoes Examples



**Acceptable Jumpers Example**

